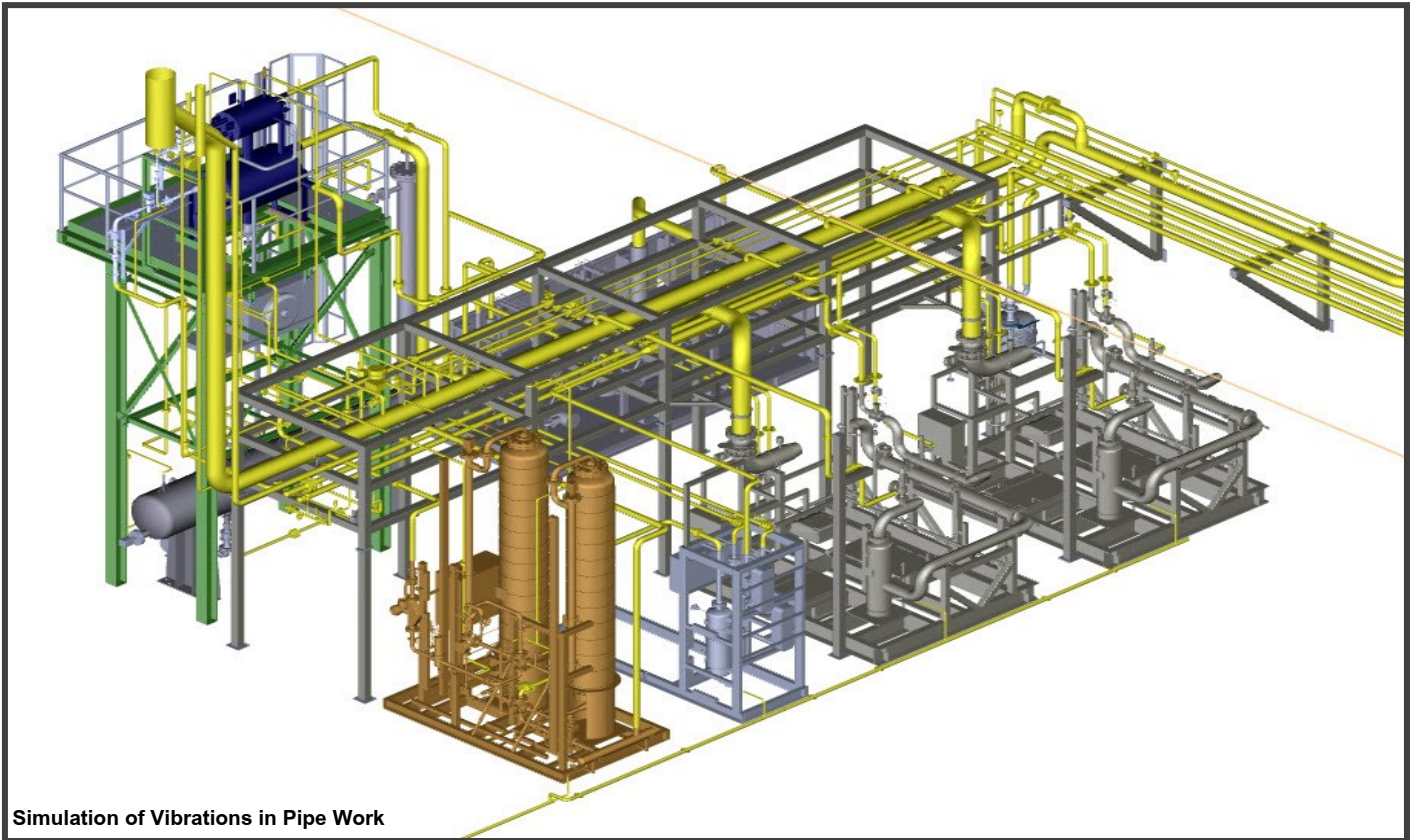


# AIC

## CONSULTING ENGINEERS



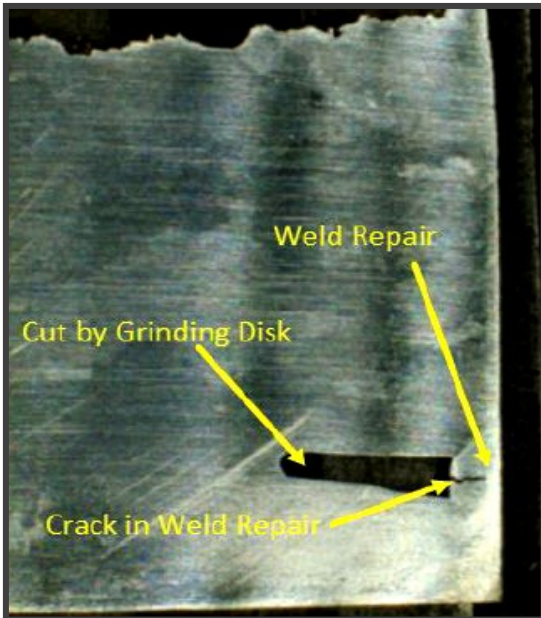
### Consulting Engineer Arthur Carlisle—Expert Witness

- Power Generation
- Electrical Networks and Switchgear
- Boilers and Steam Systems
- Rotating Machinery
- Turbines and Compressors
- Transformers
- Reciprocating Engines
- Renewables
- Materials Handling and Bulk Storage
- Plant Maintenance and Operations
- Construction

---

**AIC Consulting Engineers Limited**

256 Corbets Tey Road, London, RM142DT UK Email: [aic@rlisle.com](mailto:aic@rlisle.com) Tel: +44(0)1708 702 483 Mobile: +44(0)7786 952 518



**Analysis of Damaged Gas Turbine Blade**

## INVESTIGATIONS

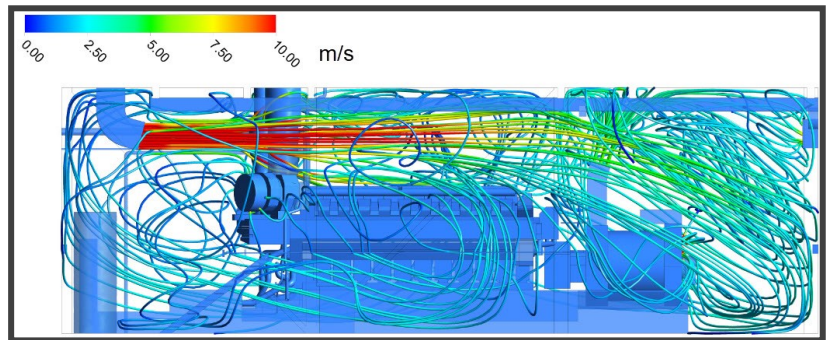
I go to great lengths to gain insight and understanding of failure events. To this end my investigations would typically include conducting physical examinations of damaged plant, collecting evidence, gathering samples for laboratory testing, making extensive use of high resolution digital photographs, understanding the sequence of events and analysing their causes and impact on the incident, interviewing witnesses and plant staff, understanding the local geography, prevailing weather conditions and CAT events.

I have participated and frequently led multi-disciplinary parties into conducting theoretical and laboratory analysis into failure events.

On conclusion of my investigations and analysis, I issue a report with my findings and opinions.

## FAILURES

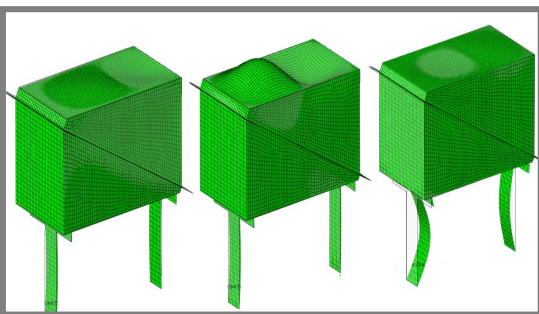
- Gas Explosion Engine Failure, UK
- Rock Crusher Failure, UK
- Transformer Failure, Spain
- Damaged Air-cooled Radiators, Australia
- Compressor Vibrations, Malaysia
- Tank Failures, UK
- Turbine Blade Failures, UK
- Steam Turbine Failures, UAE
- Wind Turbine Failure, US
- Solar Farm, Storm Damage, Thailand



**Modelling Air Flow Inside an Engine Hall**

## ROOT CAUSE ANALYSIS

- Major Failure Events
- Accidents and Incidents
- Reduced Life Cycle of Plant
- Premature End-of-Life of Equipment



**Finite Element Analysis Modelling Vibrations**

As Expert Witness, I have applied my expertise as an engineer with broad experience at senior level on plant and in industry, to advise on matters for International Arbitrations and in Court.

My appointments have included fault analysis, root cause investigations, damage assessments, recovery, repairs and restoration, and cost management.

Investigations encompass vibration analysis, metal fatigue, corrosion, creep, wear and tear, misuse, evaluation of maintenance and operating practices, environmental factors, operational data extraction and analysis.

Following completion of investigations, I draft an Expert Report and, where required, the reports follow a legal format and are used in legal proceedings.

## AIC Consulting Engineers Limited

**AIC**  

---

**CONSULTING ENGINEERS**

**AIC Consulting Engineers Limited**

E-mail: [aic@rlisle.com](mailto:aic@rlisle.com)

Telephone: +44(0)1708 702 483

Mobile: +44(0)7786 952 518

**Consulting Engineer: Arthur Carlisle** BSc(Hons) CEng MIMechE